

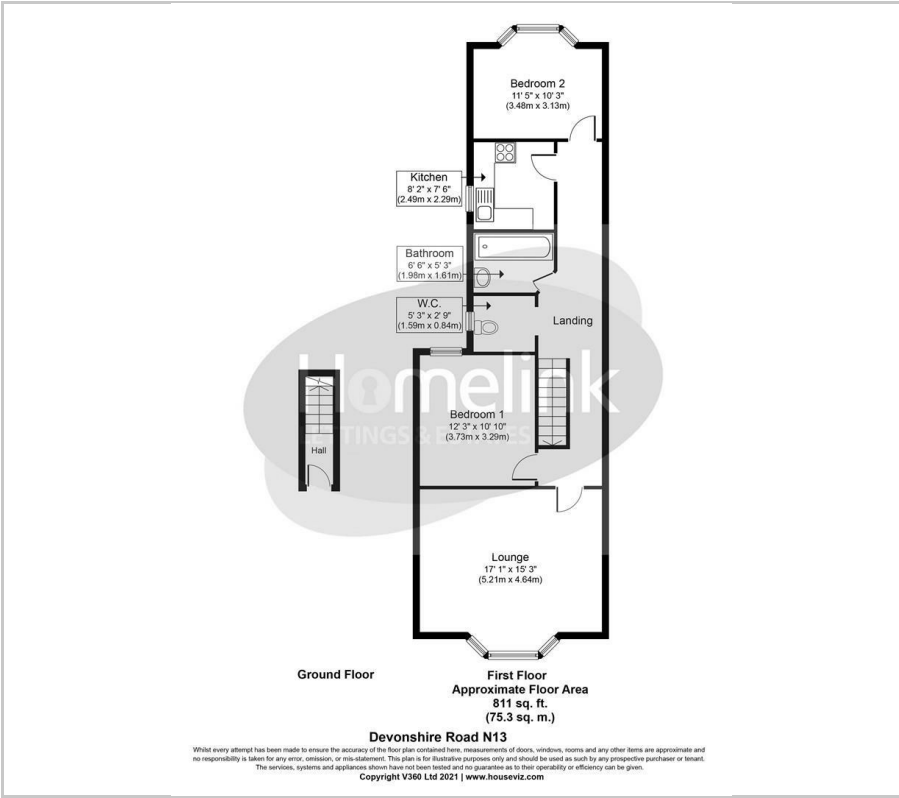


Devonshire Road, Palmers Green, N13

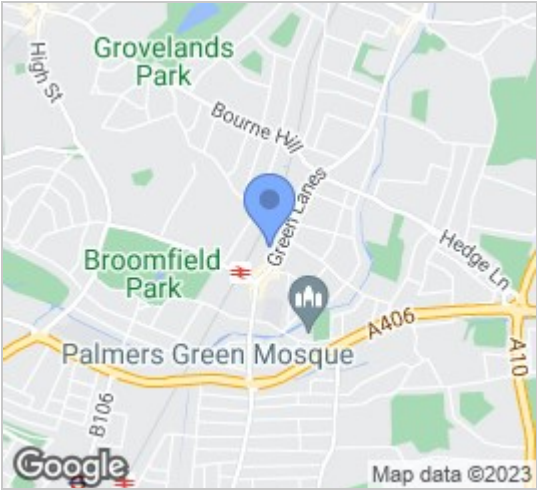
£1,400 PCM



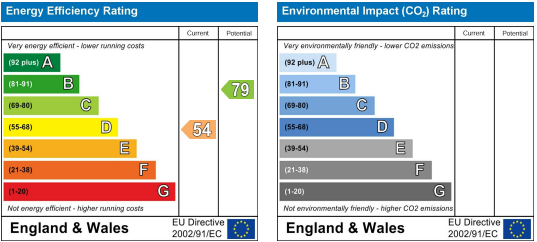
Floor Plan



Area Map



Energy Efficiency Graph



Viewing

Please contact our Homelink Lettings & Estates Office on 0208 882 2112 if you wish to arrange a viewing appointment for this property or require further information.

- First floor flat
- Fully fitted kitchen
- Fully tiled family bathroom
- Large Lounge area
- Double glazed throughout
- Close to station!
- Close to Palmers Green
- Two bedroom flat
- Must see!
- Available now!

**\*\*Close to Station\*\*** Homelink Lettings & Estates are pleased to offer this well sized property located in this most popular residential turning within two minutes' walk of Palmers Green's shops, restaurants, bus routes, Broomfield Park and mainline station into Moorgate.

Benefits include a ground floor entrance hallway with an original tessellated tiled floor and stairs to first floor, a spacious living room with large bay window and laminate floor, a modern kitchen with appliances, a modern bathroom and separate w.c., two good size bedrooms, new gas central heating system and double glazing.

Please call Homelink Lettings & Estates on 0208 882 2112 today and speak with one of our friendly lettings members of staff.



These particulars, whilst believed to be accurate are set out as a general outline only for guidance and do not constitute any part of an offer or contract. Intending purchasers should not rely on them as statements of representation of fact, but must satisfy themselves by inspection or otherwise as to their accuracy. No person in this firm's employment has the authority to make or give any representation or warranty in respect of the property.

Homelink Lettings and Estates  
62 Chase Side, London N14 5PA  
0208 882 2112 [homelink.co.uk](http://homelink.co.uk)

